

## DOOR STYLES

## Door Shutter Specifications

The diagram illustrates the assembly of a door. Component A is the main HDF panel. Component B is the stile, shown on the left and right edges. Component C is the top and bottom rail, shown at the top and bottom. Component E is the lock mechanism, shown in the center. Component F is the tower bolt, shown on the right side of the panel.

• Fire-proof & Water-proof Perlite Filling

Shutter Thickness	35mm	40mm	45mm
HDF Panel Thickness "A"	3.0mm/4.0mm	3.0mm/4.0mm	3.0mm/4.0mm
Stile Width Size "B"	30mm	50mm/70mm	50mm/70mm
Top & Bottom Rail Width Size "C"			

**Notes:**

1. HDF Panel "A" could be either flat panel or molded panel.
2. Lock Pail Size "E" is 220mm\*80mm for interior door or 350mm\*80mm for entrance door. It could also be customized size according to lock & handle set provided by client.
3. Tower Bolt Rail Size "F" is 300mm\*40mm, which is optional.

• Honey Comb Paper Filling

• MDF Strip Filling

• Wood Crates Filling

Shutter Thickness		32mm	35mm	40mm	45mm
HDF Panel Thickness "A"	Honey Comb Paper Filling	4.0mm/5.0mm	4.0mm/5.0mm	4.0mm/5.0mm	4.0mm/5.0mm
	MDF Strip Filling / Wood Crates Filling	5.0mm/6.0mm	5.0mm/6.0mm	5.0mm/6.0mm	5.0mm/6.0mm
Stile Width Size "B"		30mm	30mm	30mm/50mm	30mm/50mm
Top & Bottom Rail Width Size "C"					

**Notes:**

1. HDF Panel "A" could be either flat panel or molded panel for honey comb paper filling but could only be flat panel for MDF strip and wood crates filling.
2. Lock Pail Size "E" is 220mm\*80mm for interior door or 350mm\*80mm for entrance door. It could also be customized size according to lock & handle set provided by client.
3. Tower Bolt Rail Size "F" is 300mm\*40mm, which is optional.

## *Door Shutter Cross Section*



Flat Door (Perlite Filling)



Molded Door (Perlite Filling)



Flat Door (Honey Comb Paper Filling)



Molded Door (Honey Comb Paper Filling)



60 mins Fire-rated Door



90 mins Fire-rated Door

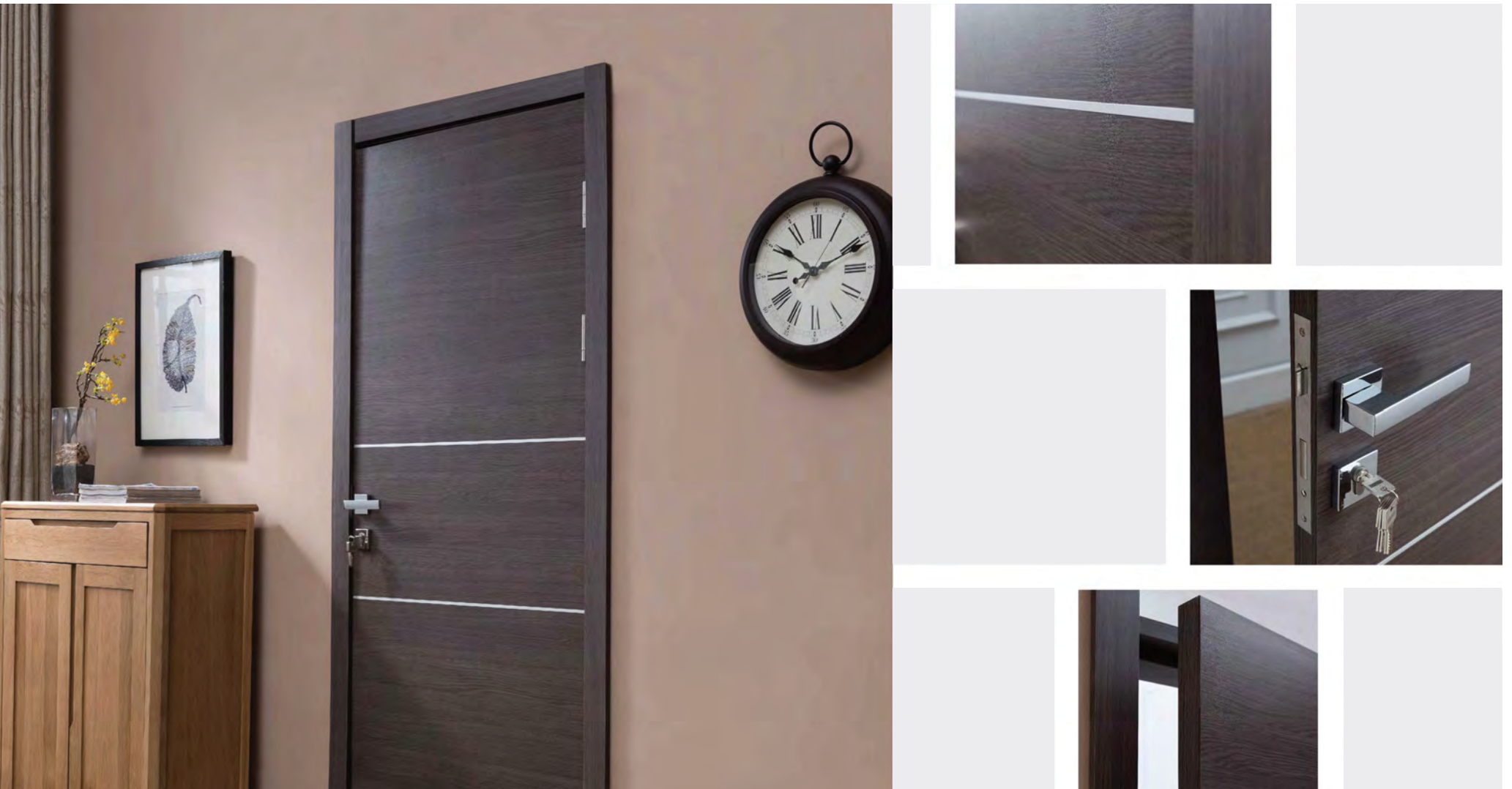


Flat Door (MDF Strip Filling)



Flat Door (Wood Crates Filling)







S2-1



S2-2



S2-3



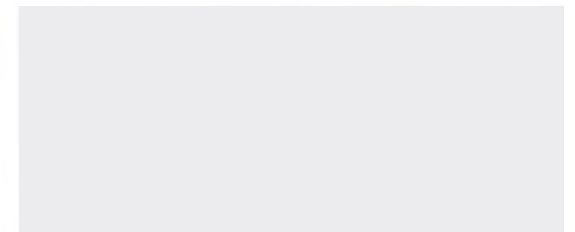
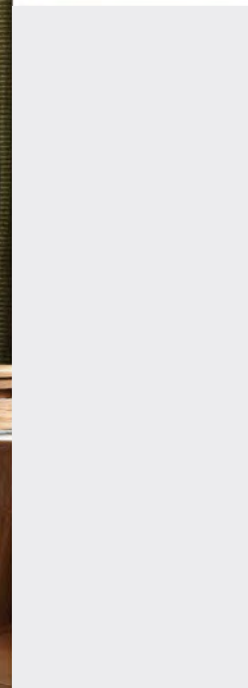
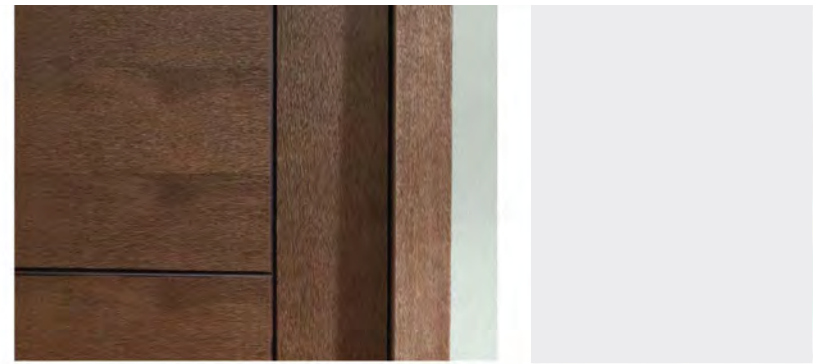
S2-4



S2-5

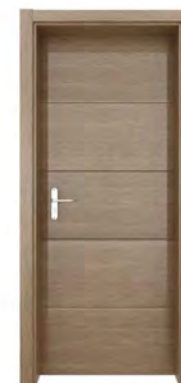
*Metal Line Series*







S3-1



S3-2



S3-3

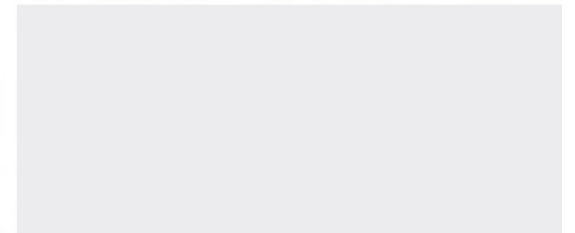
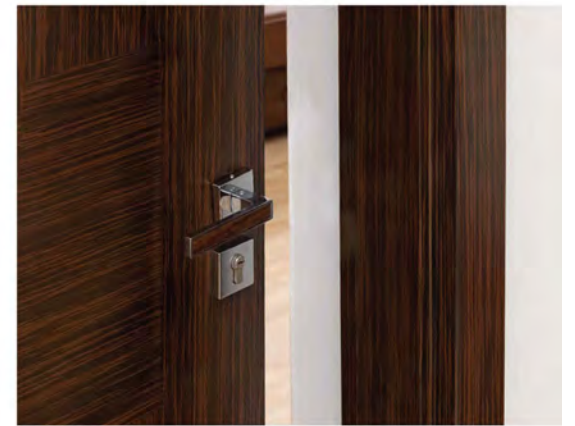
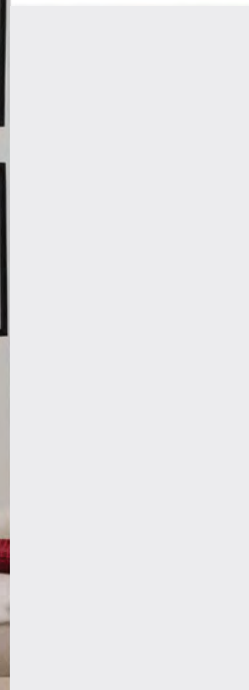
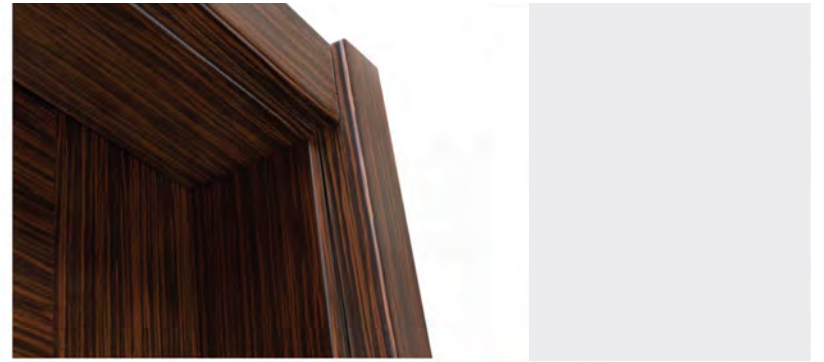


S3-4



S3-5

## Groove Pattern Series







S6-1



S6-2



S6-3



S6-4



S6-5

## *Pattern Veneer Series*

## Modern Molded Series





S8-1



S8-2



S8-3



S8-4



S8-5



S8-6



S8-7

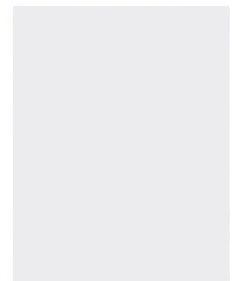
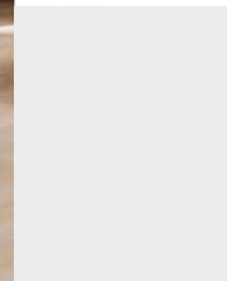
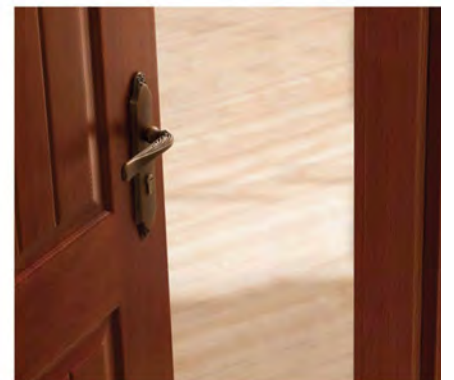
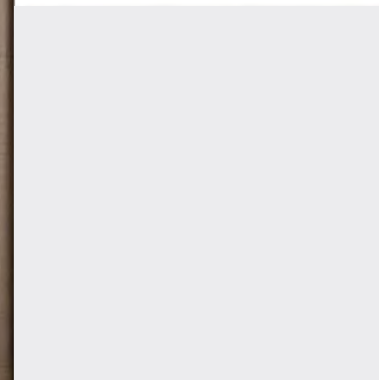
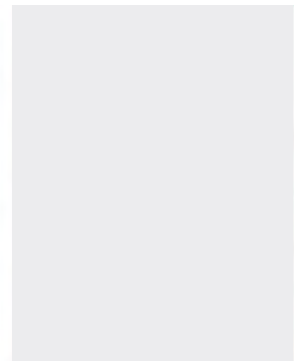
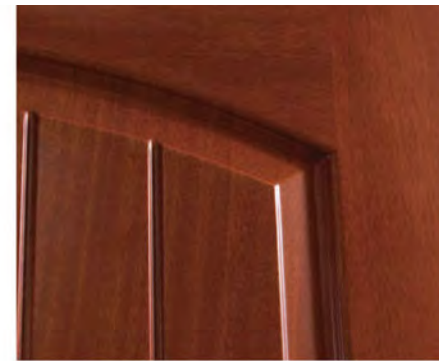


S8-8

### *Modern Molded Series*



## Classic Molded Series





S9-6



S9-7



S9-8



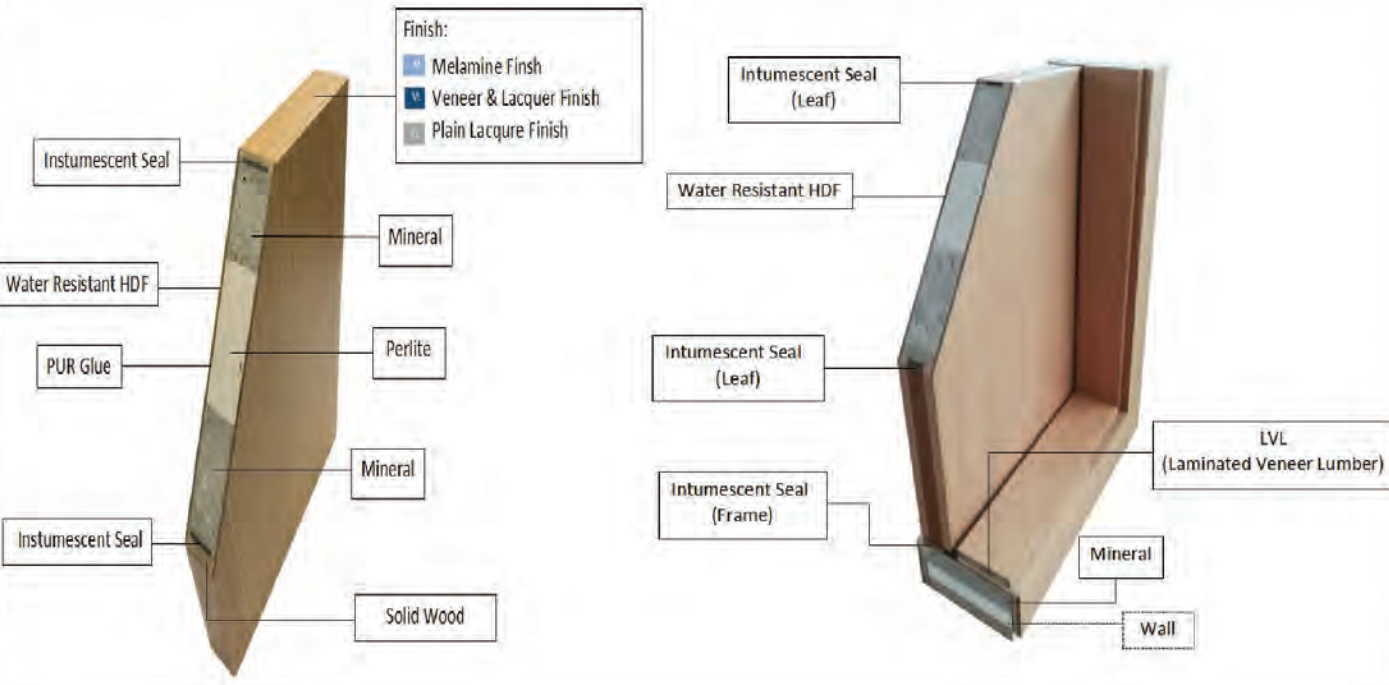
S9-9



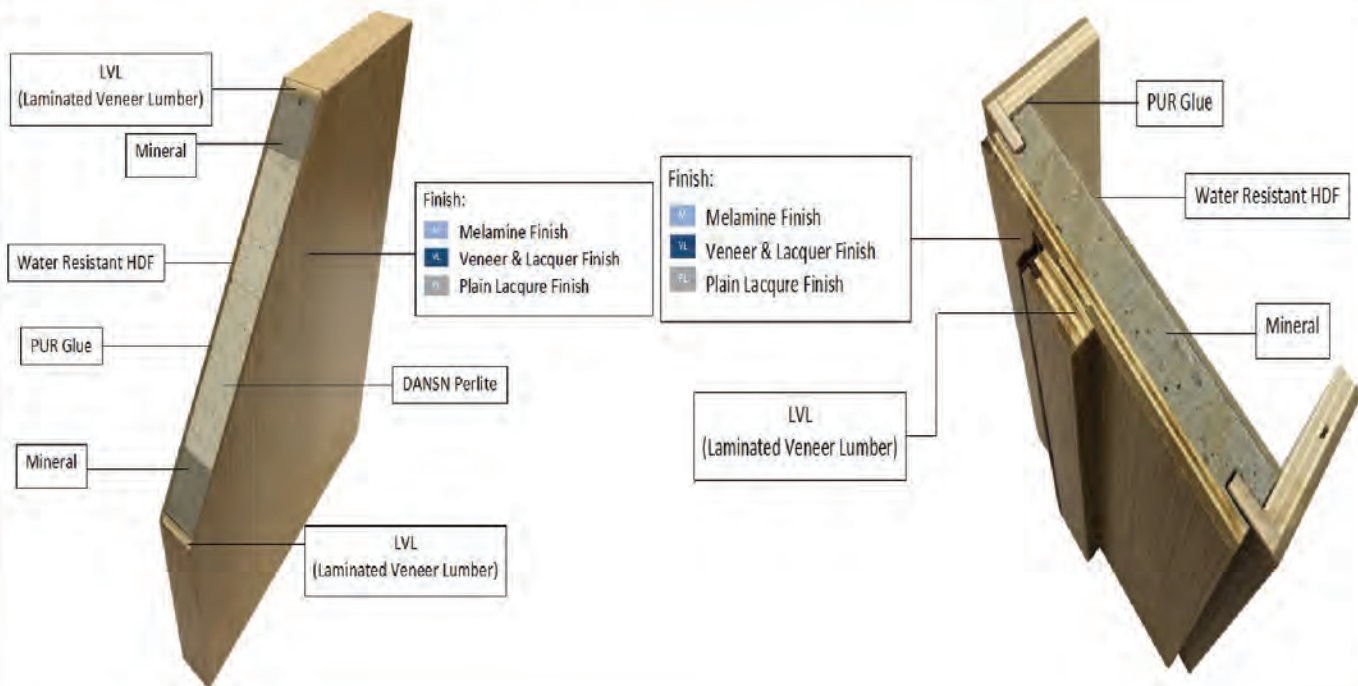
S9-10

*Classic Molded Series*



Commodity	Specification
<p><b>Fire Rated Door</b></p> <p><b>BS 30/60/90 mins</b></p> <p><b>UL 20/45/90 mins</b></p>	<p><b>Shutter (45mm Thickness):</b></p> <ol style="list-style-type: none"> <li>1. Water-proof HDF with Melamine/Veneer/ Lacquer Finish</li> <li>2. Intumescent Strip;</li> <li>3. Fire-proof Mineral Core as Internal Filling</li> </ol> <p><b>Frame and Architrave:</b></p> <ol style="list-style-type: none"> <li>1. Engineered Wood &amp; Mineral Frame + Intumescent Strip, All with Melamine/Veneer/ Lacquer Finish;</li> <li>2. L-shape Engineering Wooden Adjustable Architrave with Veneer &amp; Lacquer Finish</li> </ol>  <p><b>Finish:</b></p> <ul style="list-style-type: none"> <li>Melamine Finish</li> <li>Veneer &amp; Lacquer Finish</li> <li>Plain Lacquer Finish</li> </ul> <p><b>Shutter Components:</b></p> <ul style="list-style-type: none"> <li>Intumescent Seal</li> <li>Water Resistant HDF</li> <li>PUR Glue</li> <li>Mineral</li> <li>Perlite</li> <li>Mineral</li> <li>Solid Wood</li> </ul> <p><b>Frame Components:</b></p> <ul style="list-style-type: none"> <li>Intumescent Seal (Leaf)</li> <li>Water Resistant HDF</li> <li>Intumescent Seal (Frame)</li> <li>LVL (Laminated Veneer Lumber)</li> <li>Mineral</li> <li>Wall</li> </ul>



Commodity	Specification
<p><b>Water Proof Door</b></p>	<p>Shutter (35/40mm Thickness):</p> <ol style="list-style-type: none"> <li>1. Water-proof HDF on Both Sides with Melamine/Veneer/ Lacquer Finish;</li> <li>2. Water-proof Mineral Core as Internal Filling</li> </ol> <p>Frame and Architrave:</p> <ol style="list-style-type: none"> <li>1. Engineered Wood &amp; Mineral Frame, All with Melamine/Veneer/ Lacquer Finish;</li> <li>2. L-shape WPC/ HDF Adjustable Architrave with Melamine/Veneer/ Lacquer Finish;</li> </ol>
	 <p>The diagrams illustrate the construction of a water-proof door. The left diagram shows a cross-section of the door shutter, which consists of two layers of Water Resistant HDF (High Density Fiberboard) with a Melamine, Veneer, or Lacquer Finish. These layers are bonded together with PUR Glue and sandwich a Mineral Core. The shutter is supported by LVL (Laminated Veneer Lumber) at the top and bottom. The right diagram shows the frame and architrave assembly, which includes an L-shape WPC/HDF Adjustable Architrave with a Melamine, Veneer, or Lacquer Finish, bonded with PUR Glue to a Mineral Core. The frame is also made of LVL (Laminated Veneer Lumber). A legend indicates the finish options: Melamine Finish, Veneer &amp; Lacquer Finish, and Plain Lacquer Finish.</p>

## Normal Chinese MDF Door vs. Touch of Mosaic

	Regular MDF + Hollow Core Particleboard Filling	TOUCH OF MOSAIC (HDF + Waterproof Perlite Filling)
Before Testing		
Room Temperature Water Soaking Test		
24H		

*Normal Chinese MDF Door vs. Touch of Mosaic*

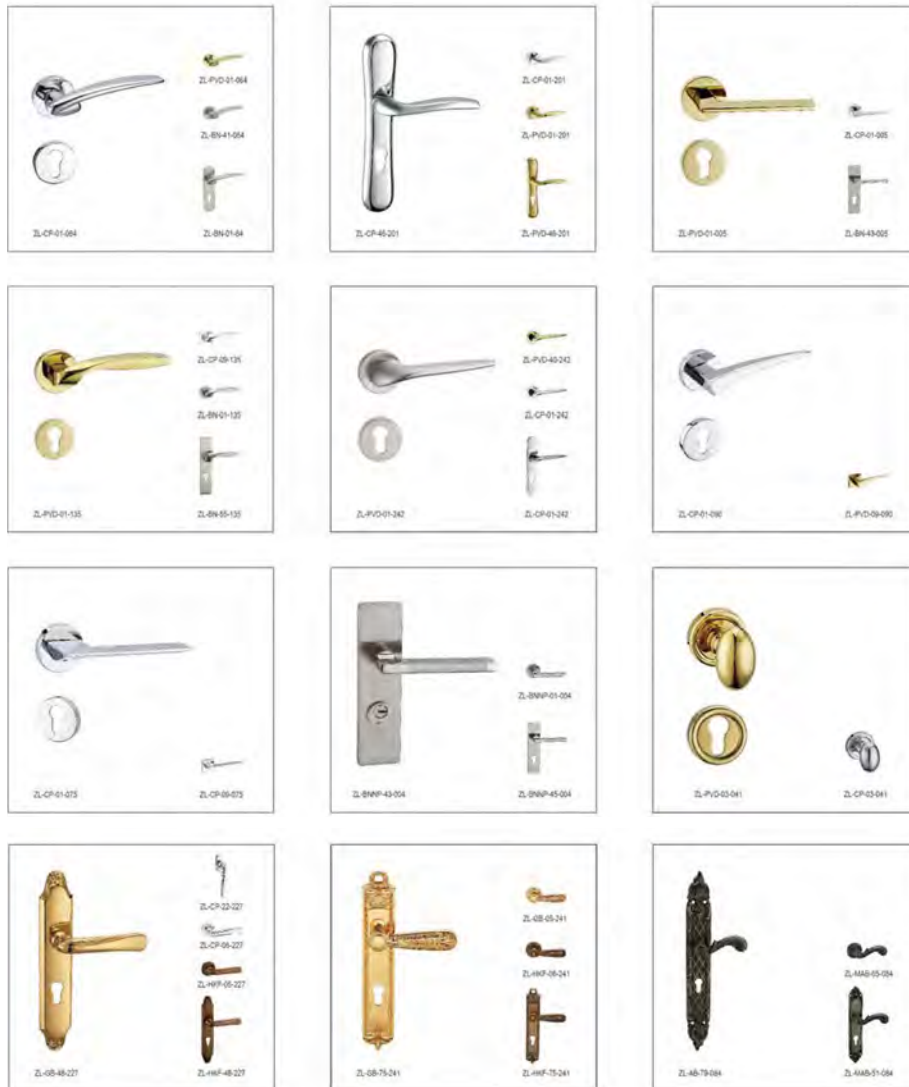
		
48H	  	  



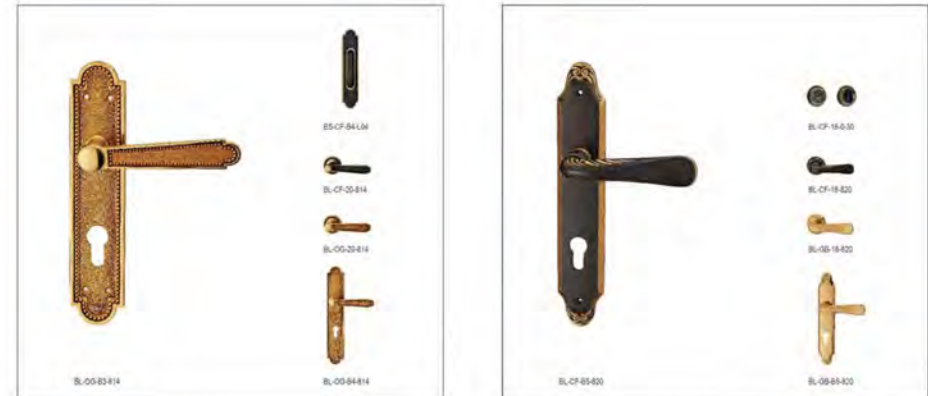
### Normal Chinese MDF Door vs. Touch of Mosaic

Test Value Comparison Details														
	Regular MDF + Hollow Core Particleboard Filling							TOUCH OF MOSAIC (HDF + Waterproof Perlite Filling)						
	Before Testing			24H		48H		Before Testing			24H		48H	
	SI No.	Test Value	Image	Test Value	Image	Test Value	Image	SI No.	Test Value	Image	Test Value	Image	Test Value	Image
Test Methods	Room Temperature Water Soaking Test							Room Temperature Water Soaking Test						
														
Test Values	1	39.85		44.32		51.79		1	39.9		40.85		41.76	
	2	40.27		43.74		47.92		2	40.29		40.94		41.89	
	3	39.51		43.94		50.01		3	40.09		41.49		41.78	
	4	39.7		42.28		47.12		4	39.83		40		41.15	
	5	39.67		40.46		42.98		5	39.88		40.25		40.26	
Average Value		39.8		42.948		47.964			39.998		40.706		41.368	

## Zinc Alloy Collection



## Brass Collection



SL 55-06-914

SL 55-28-914

SL 55-06-914

SL 55-03-914

SL 55-06-911

SL 55-28-911

SL 55-06-911

SL 55-04-913

SL 55-28-913

SL 55-06-913

SL 55-41-73

SL 55-07-73

SL 55-41-906

SL 55-28-906

SL 55-07-906

SL 55-03-906

SL 55-41-128

SL 55-07-128

SL 55-27-916

SL 55-27-917

SL 55-07-919

SL 55-28-918

SL 55-28-920

The grid displays 12 different door handle and lock models, each with its corresponding key. The models are arranged in a 4x3 grid:

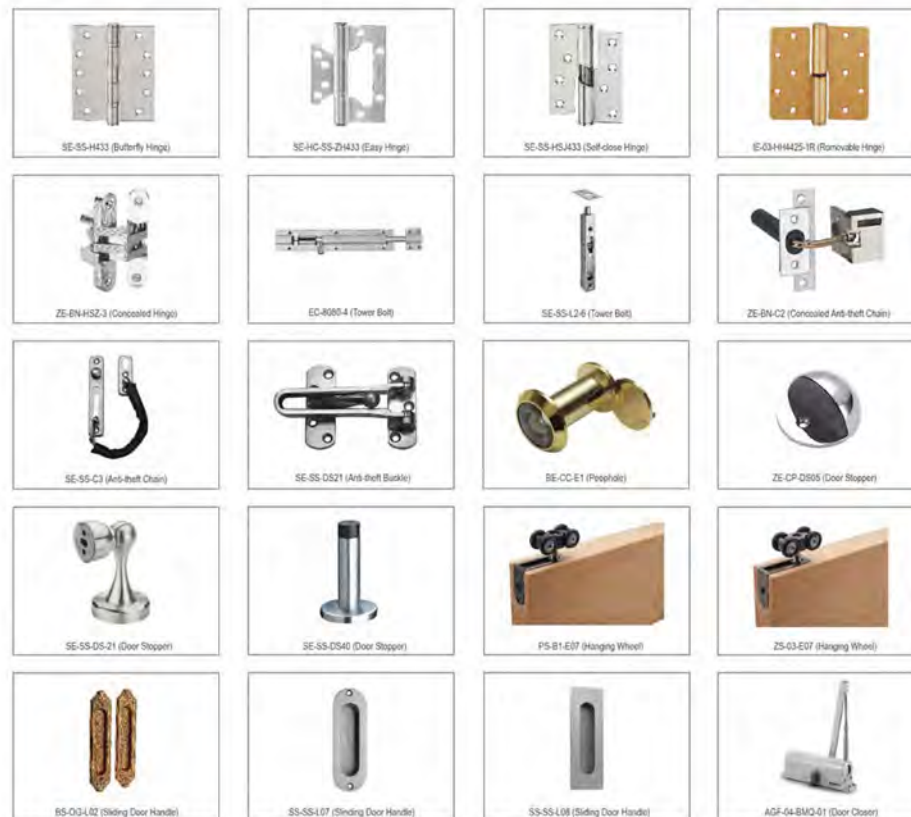
- Model 1:** ZL-PKCP-33-261 (Silver handle with wood insert, silver key)
- Model 2:** ZL-PHO-33-260 (Dark handle, dark key)
- Model 3:** WZL-HGBOP-01-254 (Silver handle with wood insert, silver key)
- Model 4:** ZL-DU-33-260 (Dark handle, dark key)
- Model 5:** ZL-CP-33-260 (Silver handle, silver key)
- Model 6:** ZL-PV-D-33-260 (Silver handle, silver key)
- Model 7:** WZL-HFV-D-09-131 (Silver handle, silver key)
- Model 8:** ZL-HOCP-09-160 (Silver handle, silver key)
- Model 9:** ZL-CP-55-228 (Silver handle, silver key)
- Model 10:** ZL-CP-55-228 (Silver handle, silver key)
- Model 11:** ZL-PV-D-01-157 (Silver handle, silver key)
- Model 12:** ZL-CP-09-026 (Silver handle, silver key)



## Lock Body and Cylinder



## Other Hardware



## Door Frame Design Scheme

